

THE TREE OF LIFE
Rooted in Humanity

Community Update

April 22, 2026



Introduction of Presenters

Craig Dunham - Dunham reGroup

Carla Swickerath – Studio Daniel Libeskind

James Messina – Jendoco Construction

THE TREE OF LIFE

Agenda

Design Update

Construction Update

Zoning Hearing – Special Exception

Questions

THE TREE OF LIFE

Project Team

Design Architect

Associate Architect

Engineers

Landscape Architect

Civil Engineer

Owner's Representative

At-Risk Construction Manager

Pre-Construction Estimating

Studio Daniel Libeskind

IKM Architects

Buro-Happold

LBA

PVE

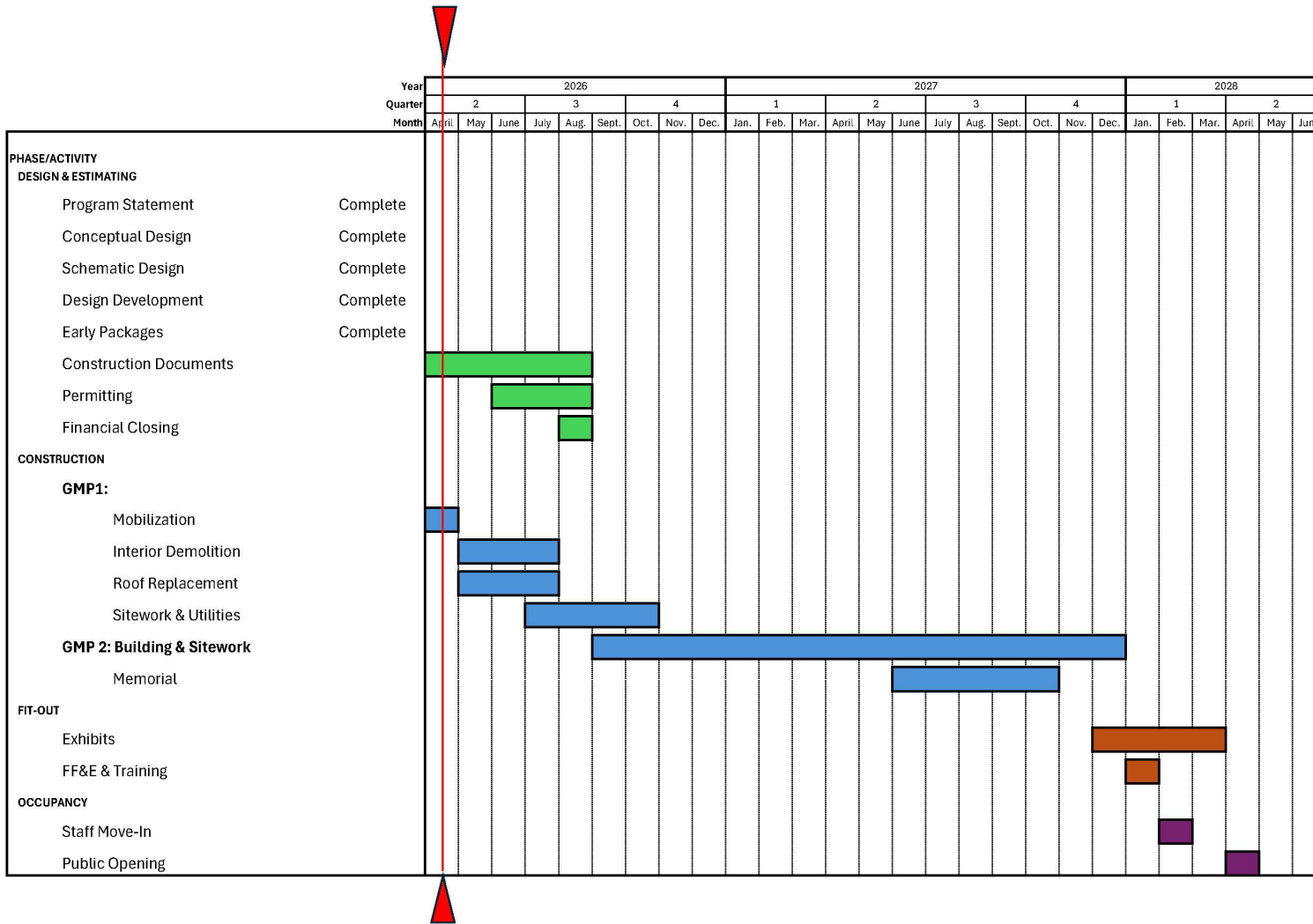
Dunham reGroup

Jendoco Construction

AtkinsRealis

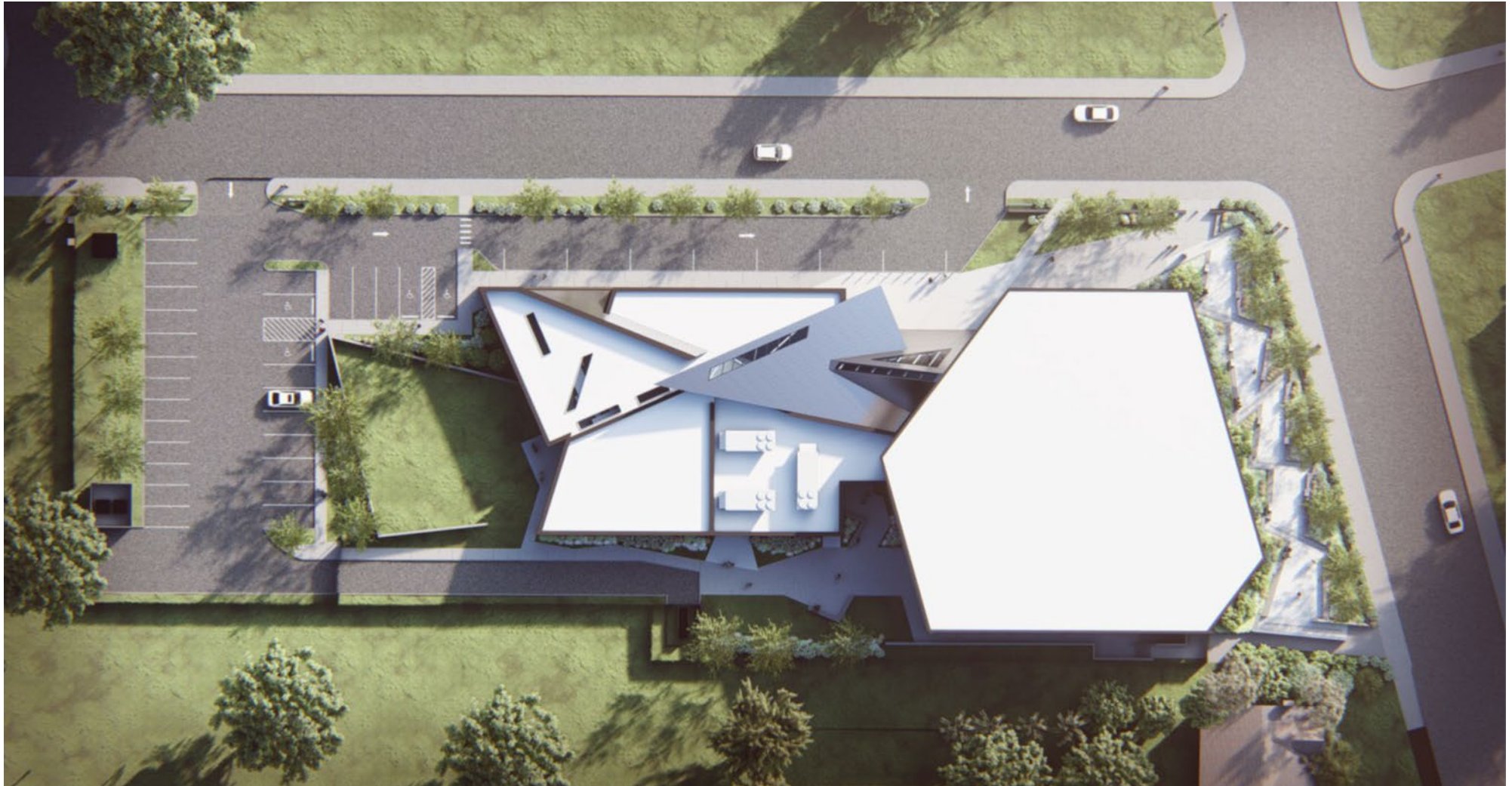
THE
TREE
OF
LIFE

Project Schedule



THE TREE OF LIFE

Site Plan



Proposed Site Plan

The Memorial

Designed by Daniel Libeskind in partnership with the families and congregations impacted by the attack, the Memorial honors the 11 Jews from three congregations killed while worshipping on October 27, 2018. The Memorial will provide a space for remembrance and reflection, ensuring that the full, beautiful lives of the 11 victims are never forgotten.



Exterior Views



THE TREE OF LIFE
AERIAL VIEW - NORTHEAST

Studio Libeskind

Exterior Views



THE TREE OF LIFE
AERIAL VIEW - NORTHWEST

Studio Libeskind

Exterior Views



THE TREE OF LIFE
VIEW FROM SHADY AND WILKINS

Studio Libeskind

Exterior Views



THE TREE OF LIFE
NORTHERN STREET VIEW

Studio Libeskind



THE TREE OF LIFE
SOCIAL HALL LAWN

Studio Libeskind



THE TREE OF LIFE
NORTHERN VEHICULAR GATE ENTRANCE & PARKING

Studio Libeskind



THE TREE OF LIFE
COURTYARD

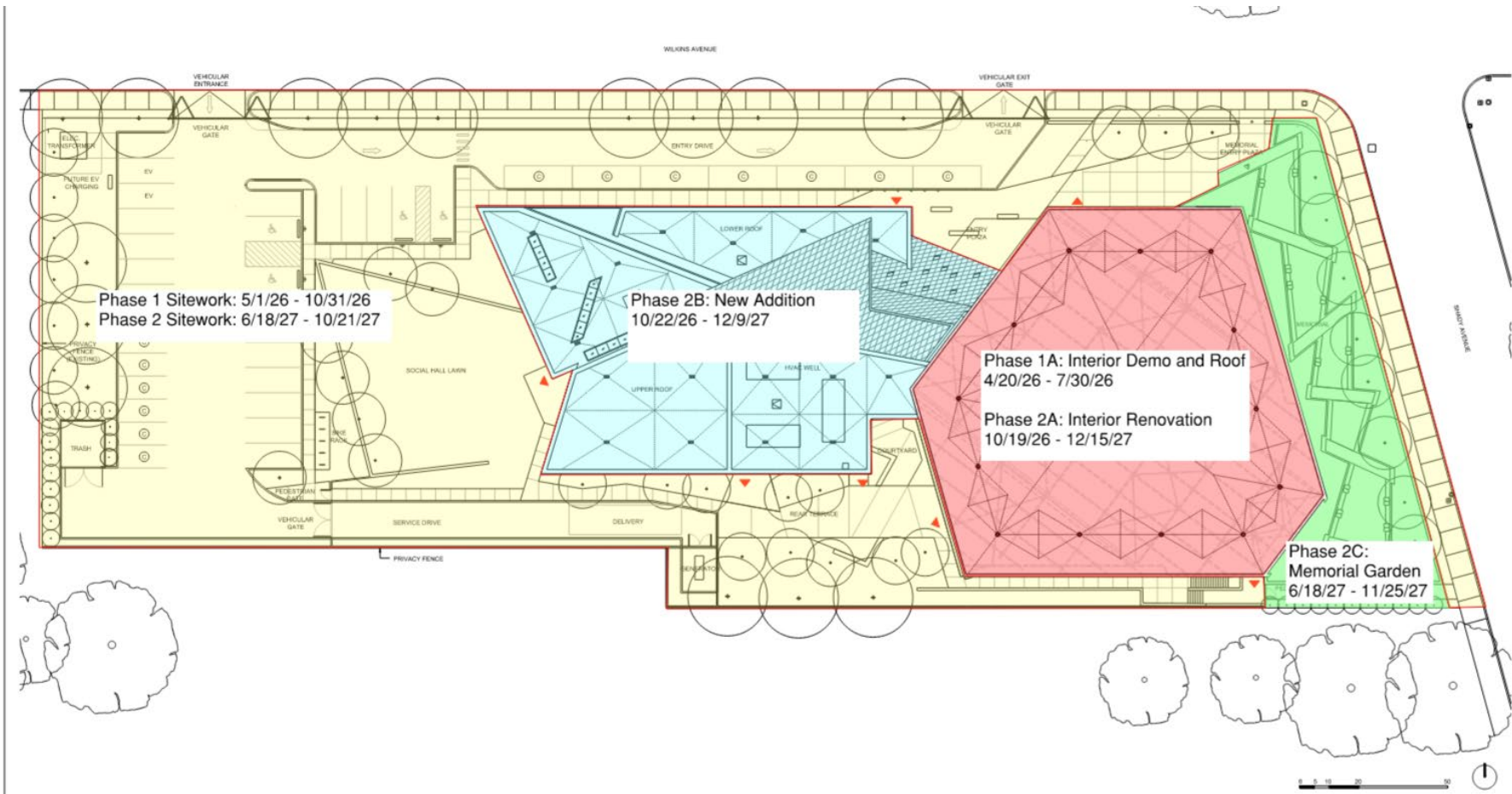
Studio Libeskind

Jendoco Construction



- History and Project Experience
- Key Personnel
 - Site Superintendent: Tom Eger, 412-475-4540
 - Project Manager: Jimmy Messina, 412-592-5229
 - Office Phone: 412-361-4500

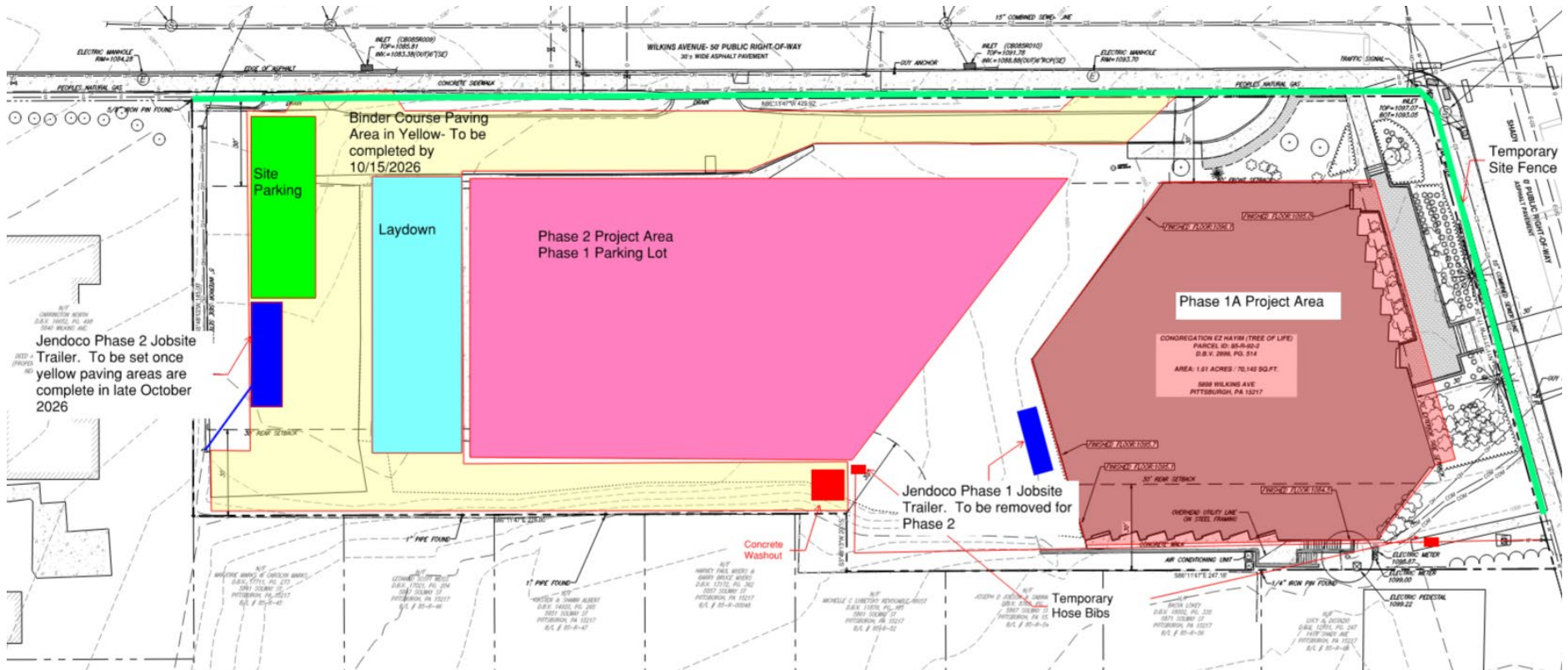
Construction Phasing



Phase 1

- Scope Items
 - Existing Building Interior Demolition (4/20/26 – 7/30/26)
 - Existing Building roof Replacement (5/29/26 – 7/30/26)
 - Phase 1 Site/Utilities (7/8/26 – 10/31/26)
 - Solway St. Privacy Fencing (10/19/26 – 11/6/26)
- Work Hours
- Contractor Parking

Construction Staging



Generator Noise: Special Exception

Background:

A Fire Sprinkler system is required in the building. Low water pressures to the site means a fire pump is required. A generator is required for power backup to operate the fire pump for 8 hours. City of Pittsburgh and NFPA 20 only permit diesel power generators.

Utilizing a manufacture provided Level 2 sound attenuation for the generator, the sound level will not exceed 78 dB(a) at the property line.

Decibels	Example
0	Silence
10	Breathing, ticking watch
20	Rustling leaves, mosquitos
30	Whispering
40	Light rain, computer hum
50	Quiet office, refrigerator
60	Normal conversation, air conditioner
70	Shower, toilet flush, dishwasher
80	City traffic, vacuum cleaner
90	Music in headphones, lawn mower
100	Motorcycle, hand drill
110	Rock concert, chain saw
120	Thunderclap
130	Maximum stadium crowd noise
140	Aeroplane taking off
150	Fighter jet take off
160	Shot gun
170	Fireworks
180	Rocket launch

Generator Noise: Special Exception

Zoning Context: Section 916.06: Noise

No use that is subject to Residential Compatibility Standards shall generate noise in excess of 45dB(a) or 3 dB(a) above Background Sound levels, whichever is greater, between the hours of 10:00 pm and 6:00 am. Or in excess of 55 dB(a) above background sound levels at all other times as measured from the lot line.

A. Background Sound Levels shall mean the measured sound level in area [measured levels on 10/25 were 45dB(a) at day and 48 dB(a) at night]

B. Applications for generators shall include a commitment to schedule regular testing and maintenance during daytime hours to minimize impact to surrounding residential properties.

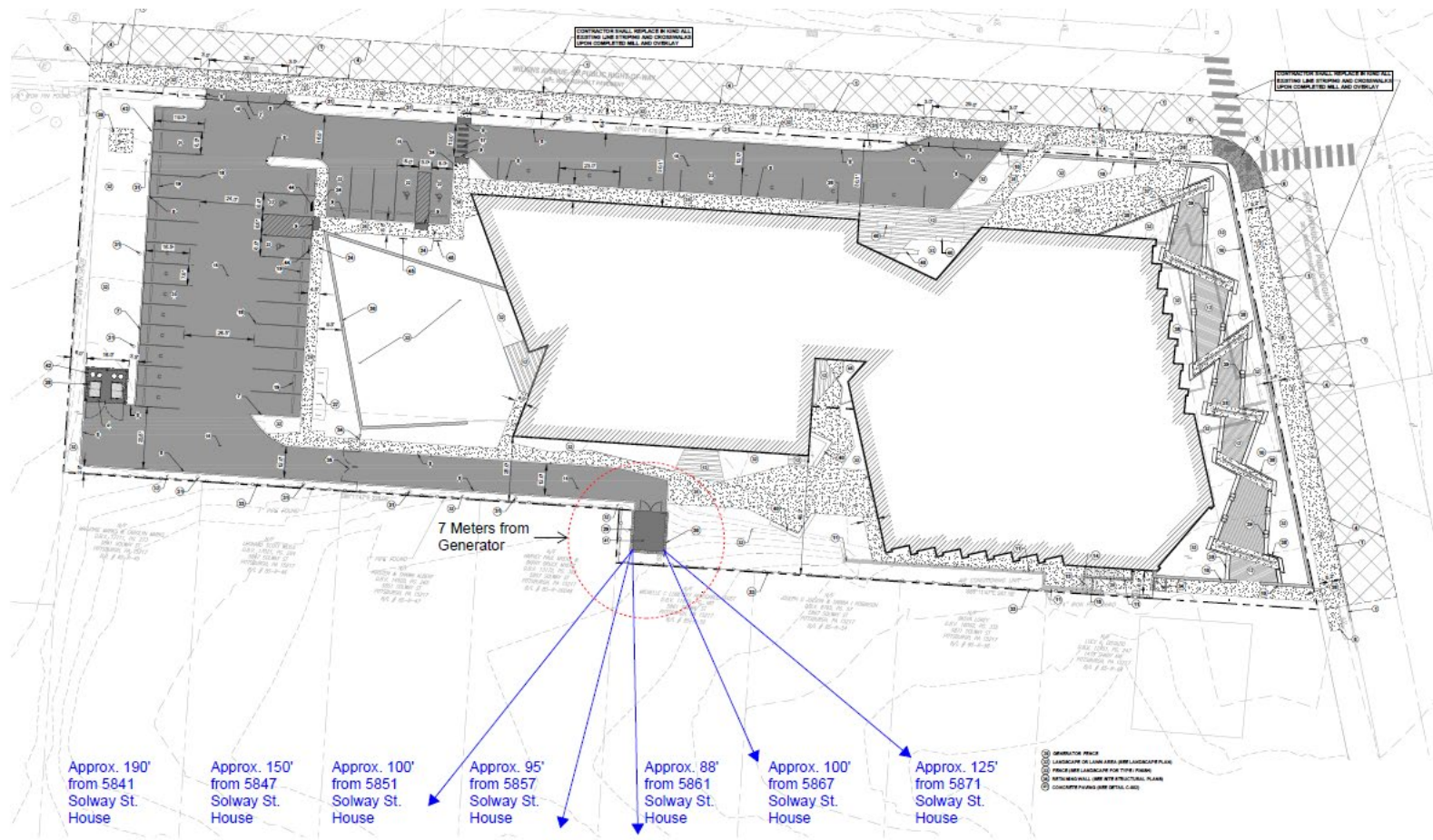
Existing Conditions



Overlay with Proposed Design



Distance to Residences



Sound Data



Sound data
C50D6C
QSB5-G13 60Hz
Diesel Generator Set

Sound Pressure Level @ 7 meters, dB(A)

See notes 2,5,7-11 listed below

Configuration	Exhaust system	Position (Note 1)								8 Position Average
		1	2	3	4	5	6	7	8	
Standard – Unhoused	Infinite Exhaust	77.2	79.5	79.4	81.8	78.5	81.1	80.6	79.7	79.9
F216-2 Weather Protective Aluminium	Mounted	78.2	79.6	78.1	81.5	80.5	80.6	79.2	79.2	79.7
F231-2 Sound Attenuated Level 1, Aluminium	Mounted	78.1	74.8	70.3	72.5	72.2	72.7	71.9	74.9	74.1
F217-2 Sound Attenuated Level 2, Aluminium	Mounted	71.2	70.9	67.7	70.1	70.1	70.4	70.1	71.1	70.3

- 2. Seven-meter measurement location 1 is 7 meters (23 feet) from the generator (alternator) end of the generator set, and the locations proceed counter clockwise around the generator set at 45° angles at a height of 1.2 meters (48 inches) above the ground surface.
- 5. Reference Sound Pressure Level is 20 µPa.
- 7. Sound data for remote-cooled generator sets are based on rated loads without cooling fan noise.
- 8. Sound data for the generator set with infinite exhaust do not include the exhaust noise contribution.
- 9. Sound levels are subject to instrumentation, measurement, installation, and manufacturing variability.
- 10. Unhoused/Open configuration generator sets refers to generator sets with no sound enclosures of any kind.
- 11. Housed/Enclosed/Closed/Canopy configuration generator sets refer to generator sets that have noise reduction sound enclosures installed over the generator set and usually integrally attached to the skid base/base frame/fuel container base of the generator set.

Estimated sound level at property line is 78 dB(a)

Generator Operations

Testing and maintenance of the Generator will be conducted monthly:

- Daytime and at a regular pre-scheduled time
- Duration 30 minutes

Tank size 250 gallons

Anticipated tank refill every 1-2 years

ZBA Hearing – May 14, Time TBA
Special Exception Request (BDA-2025-06911)

THE TREE OF LIFE

Rooted in Humanity

Thank you

